

# USER GUIDE

## KEYS OF ENCRYPTION

### KRYPTKEY RANGE

#### Technical prerequisites

- PC : Windows7 operating system and next
- Mac : MacOS 10.10 (Yosemite) and 10.11 (El Capitan)

#### In summary

You have just acquired a solution that makes it easy to encrypt and decrypt files from your computer or any device connected to it, using the **KryptKey** Smart USB Key.

To assign all these capabilities, you must activate **KryptKey** when it is first used and then, with each new use, you will authenticate to ensure that you are its owner.

When **KryptKey** is enabled, you have full discretion whether or not to use its cryptographic functions.

You can back up the encrypted documents on the key, on a hard drive (internal or external) or on your servers in the Cloud., And send / receive **secure emails** \*\* (encrypted and transported via a specific architecture)

This key also allows you to create a virtual disk on your computer (MAC or PC). This is only visible if your **KryptKey** is activated.

Several very simple ways to manage the encryption of documents:

- File context menu (right click) (on Mac and PC when the application is installed on the PC)
- Double-click on the file (on Mac and PC when the application is installed on the PC)
- Simple "Drag" to the safe (on PC).

Your **KryptKey** is unique, you can only decrypt files previously encrypted with it.

## **In détails,**

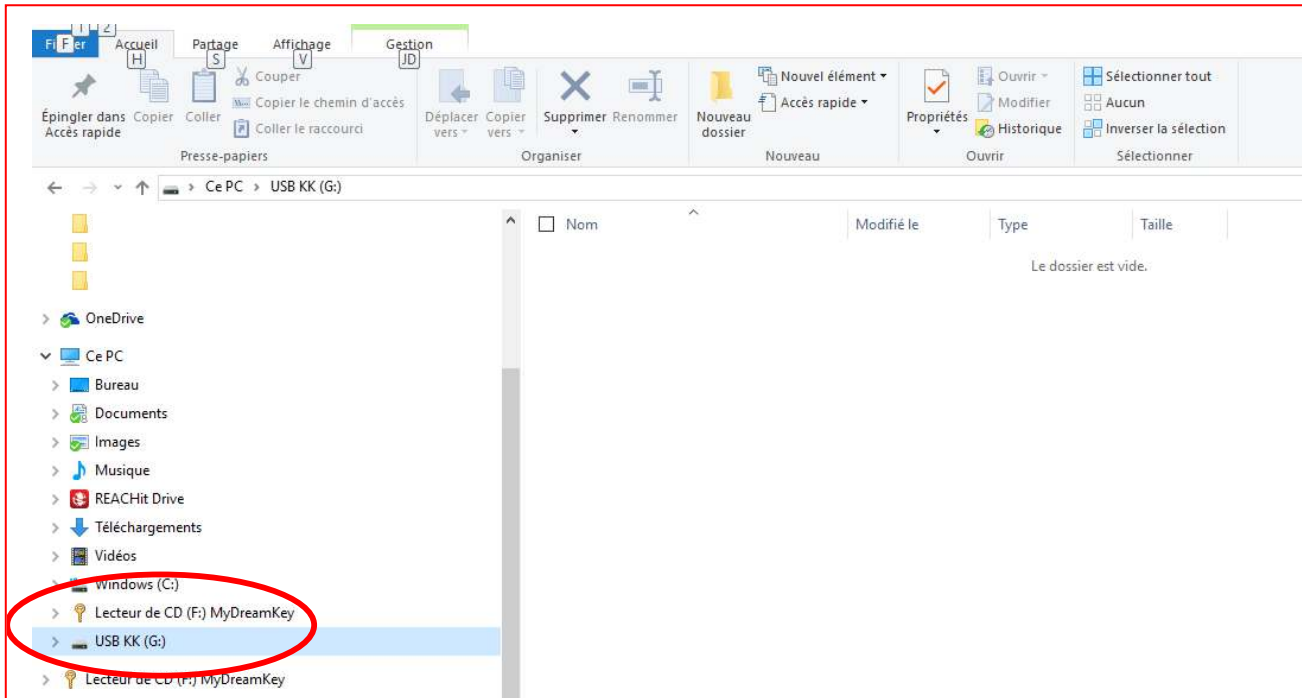
|  |           |
|--|-----------|
| <b>INITIAL PROCEDURE</b>   | <b>3</b>  |
| 1- Connect your KryptKey key to your PC / Mac.                                       | 3         |
| 2- In the MyDreamKey partition, launch the MyDreamKey.exe or MyDreamKey application. | 3         |
| 3- The following window appears.   | 4         |
| <b>CURRENT USE</b>   | <b>5</b>  |
| <b>Encryption / Decryption</b>   | <b>5</b>  |
| Using a Virtual Disk*  | 6         |
| Virtual Disk Management (Create / Delete / Increase Size)*                           | 6         |
| Creating a Virtual Disk*   | 6         |
| Disconnecting the Virtual Disk *   | 7         |
| Enlarging the Virtual Disk *   | 7         |
| Removing the Virtual Disk *  | 7         |
| <b>Encrypted Email Management**</b>  | <b>8</b>  |
| Installing the software on the KryptKey **   | 8         |
| Writing messages**   | 9         |
| Settings**   | 10        |
| <b>Installing the KryptKey app on your PC</b>  | <b>11</b> |
| Password management  | 12        |
| Password change  | 12        |
| Forgot your password   | 12        |
| LOSS OF YOUR KRYPTKEY KEY  | 13        |
| <b>DEBRIDING YOUR KEY KRYPTKEY Essential KEY KRYPTKEY</b>                            | <b>14</b> |

## INITIAL PROCEDURE

For this first use, an internet connection from your PC or Mac is required.

### 1- Connect your KryptKey key to your PC / Mac.

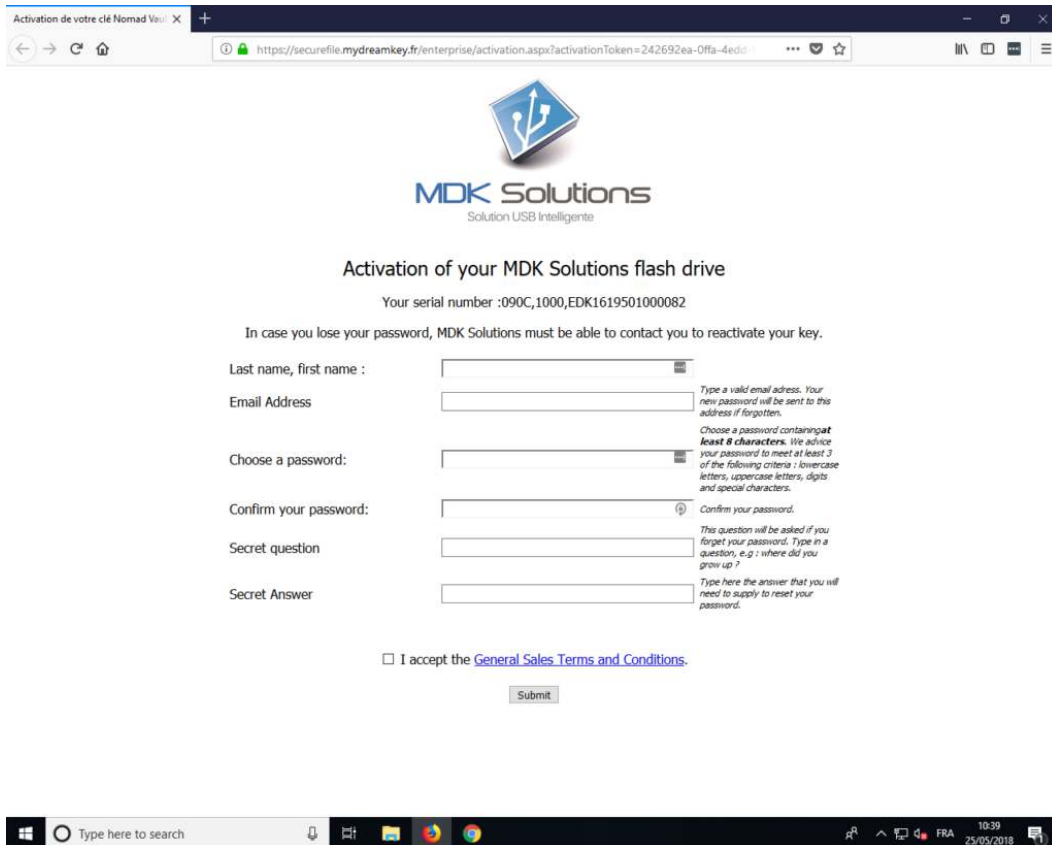
This key contains 2 partitions. A USB partition for storage and a MyDreamKey CD partition containing **MyDreamKey.exe** (PC) or **MyDreamKey** (Mac)



### 2- In the MyDreamKey partition, launch the MyDreamKey.exe or MyDreamKey application.




### 3- The following window appears.



Activation de votre clé Nomad View X

https://securefile.mydreamkey.fr/enterprise/activation.aspx?activationToken=242692ea-0ffa-4ed0...

  
MDK Solutions  
Solution USB Intelligente

Activation of your MDK Solutions flash drive

Your serial number :090C,1000,EDK1619501000082

In case you lose your password, MDK Solutions must be able to contact you to reactivate your key.

Last name, first name :

Email Address  Type a valid email address. Your new password will be sent to this address if forgotten.

Choose a password:  Choose a password containing at least 8 characters. We advise your password to meet at least 3 of the following criteria : lowercase letters, uppercase letters, digits and special characters.

Confirm your password:  Confirm your password.

Secret question  This question will be asked if you forget your password. Type in a question, e.g : where did you grow up ?

Secret Answer  Type here the answer that you will need to supply to reset your password.

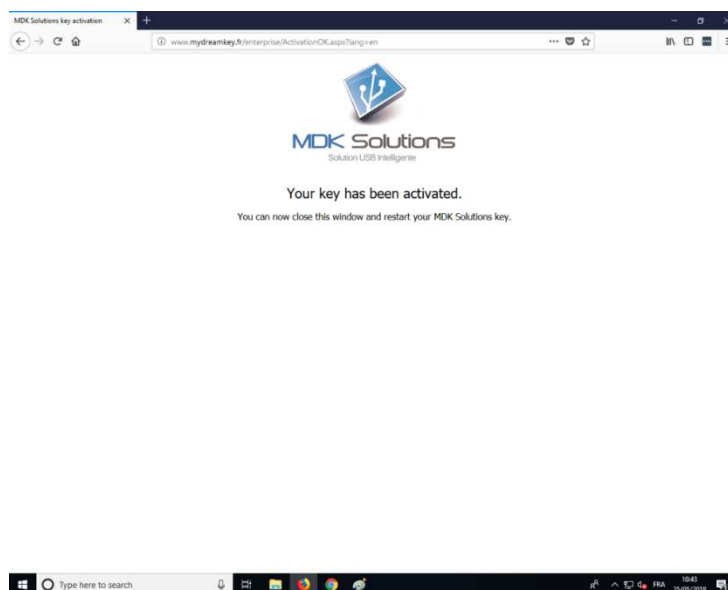
I accept the [General Sales Terms and Conditions](#).

Type here to search

10:39 25/05/2018


Fill out the activation screen with your name, email, password and secret questions / answers.

This data will be used in the password reactivation and reset procedures (this function does not affect the password of the **Secure Email** function of **KryptKey Mail**).



MDK Solutions key activation

www.mydreamkey.fr/enterprise/ActivationOK.aspx?lang=en

  
MDK Solutions  
Solution USB Intelligente

Your key has been activated.

You can now close this window and restart your MDK Solutions key.

Type here to search

10:41 25/05/2018

## CURRENT USE

Launch the application MyDreamKey.exe, file present on the partition CD / MyDreamKey, of KryptKey, of your computer.

Saisissez votre mot de passe.

*If you have an active Internet connection, the application will access the MDK Solutions server to update the key with any recent software updates. Windows can ask you questions. Answer any Windows messages.*

On your PC, a "safe" icon appears on the top right of your screen.

On a MAC, the KryptKey application is then accessible from the context menu.

You can then use the encryption functions.



### Encryption / Decryption

To encrypt a folder or file, drag it to the vault \* or directly to the USB stick or double-click it (if MAC or MyDreamKey application installed on your PC).

To decrypt it, double-click.

Your document automatically opens in its original format with the associated application (word, excel, ppt, pdf, ...)

When closing the document, it is automatically encrypted on its support and takes a **.mdkc** extension.

Encrypted files can be stored :

- on the KryptKey
- on your internal hard drive \*
- on an external support \*
- in the cloud\*
- on a virtual disk on your computer \*.

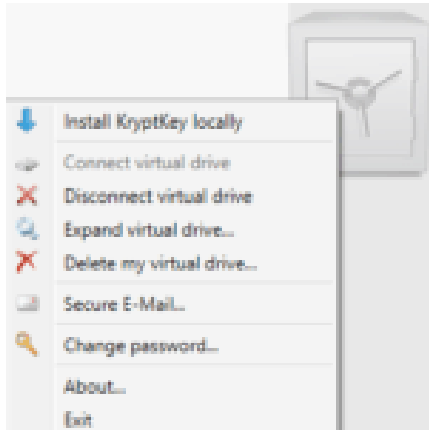
*\* These features are only available on the KryptKey and KryptKey Mail versions. To access it from KryptKey Essential, simply purchase the update online from the KryptKey Menu / About.*

## Using a Virtual Disk\*

A virtual disk is a partition of the internal disk of a PC. This partition and its contents are visible only after the activation of the key **KryptKey**.

The virtual disk can create a file backup environment on any computer (PC or MAC), space that will be visible when the key is correctly identified. For added security, documents are encrypted.

## Virtual Disk Management (Create / Delete / Increase Size)\*



*Via the menu of KryptKey - –  
right click on the safe.*

## Creating a Virtual Disk\*

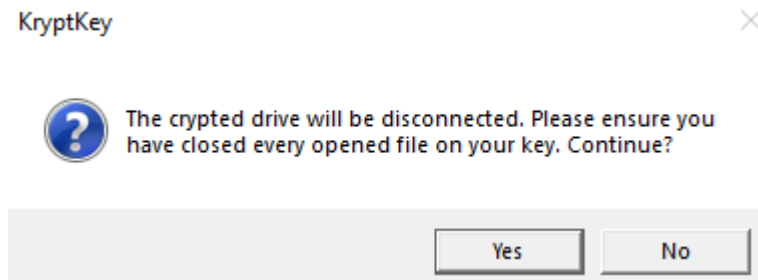
NB : To create a virtual disk, you must have the administrator right of your PC.

To create a virtual disk on your PC, go to the vault menu (right-click on the vault) and select "Create Virtual Disk".

All folders / files created / dropped on this virtual disk are automatically encrypted. To read / modify these files, simply drag them to the "safe" icon.

*\* These features are only available on the KryptKey and KryptKey Mail versions. To access it from KryptKey Essential, simply purchase the update online from the KryptKey Menu / About.*

## Disconnecting the Virtual Disk \*

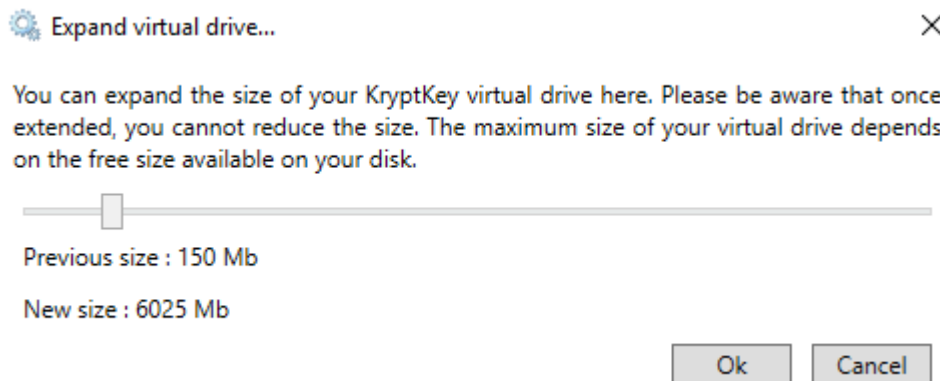


After this operation, the virtual disk is no longer visible.

## Enlarging the Virtual Disk \*

By default, the Virtual Disk occupies a space of 150 MB.

You can enlarge its size to store a larger amount of data.

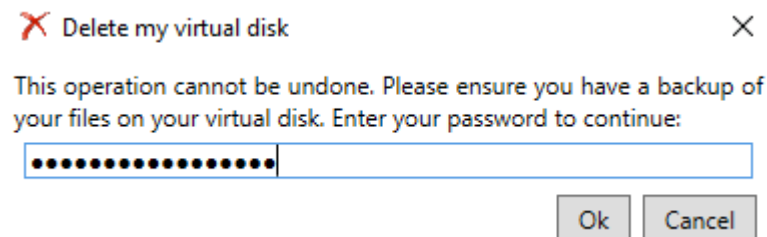


By moving the slider, you increase the storage capacity of the virtual disk.

This operation is irreversible. You will not be able to reduce the size of this Virtual Disk.

## Removing the Virtual Disk \*

Removing the virtual disk causes the files stored in it to be lost.



*\* These features are only available on the KryptKey and KryptKey Mail versions. To access it from KryptKey Essential, simply purchase the update online from the KryptKey Menu / About*

## Encrypted Email Management\*\*

Only users who have taken the Encrypted Email management option have this menu



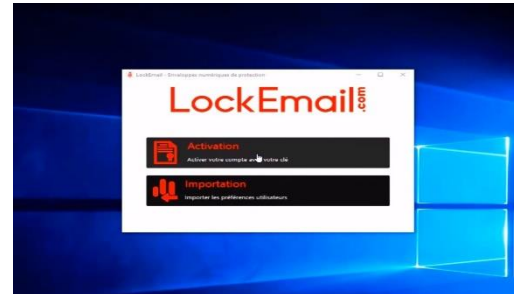
This feature is realized in partnership with LockEmail.com.

### Installing the software on the KryptKey \*\*

When using this function for the first time you are directed to an initialization procedure. For security reasons, it is independent of the **KryptKey** activation procedure.

Press **Activation**, the window below is displayed

LockEmail - Secured emails



# LockEmail.com

Registration Key: 0cca5f29-adb7-4aab-bd82-58cfb8601b4d

Email Address: [redacted]@gmail.com

Pass Phrase: [redacted]

[Progress bar: green] strong

Confirm: [redacted]

**Enter the registration key** you obtained with your subscription.

**Saisissez l'adresse email** que vous soulez utilisez pour vos Emails Chiffrés. Elle pourra toujours être utilisée via votre gestionnaire d'email classique. Nous ne l'utilisons que comme identifiant.

**Enter the email address you use for your Encrypted Emails.** It can still be used via your classic email manager. We only use it as an identifier

**Then choose your password.** The green color of the progress bar will indicate that your password is strong. **Confirm** with the second entry, then **confirm**





**ATTENTION** : Neither LockEmail.com nor MDK Solutions stores this password. In case of loss we will not be able to retrieve your login information. You will lose the ability to read your encrypted emails

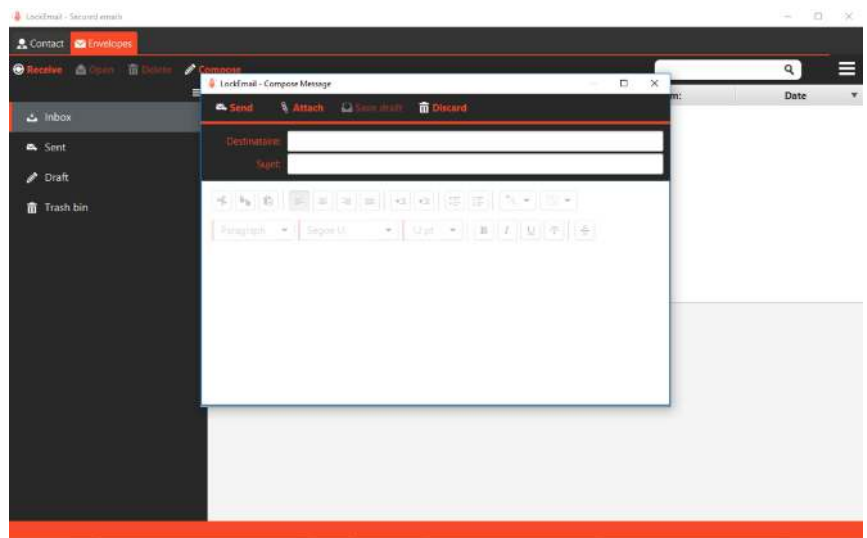
**IMPORTANT** A reset password change will cause the loss of your old emails.

We advise you : <https://sourceforge.net/projects/passafe/?SetFreedomCookie>

As well as a regular backup of your mail.

## Writing messages\*\*

This function is a classic messaging function. Just press write to compose your message and attach your attachment.



The function as soon as you press, will encrypt the body of the message and the attachment, the more your attachment is big plus the time of encryption is long.

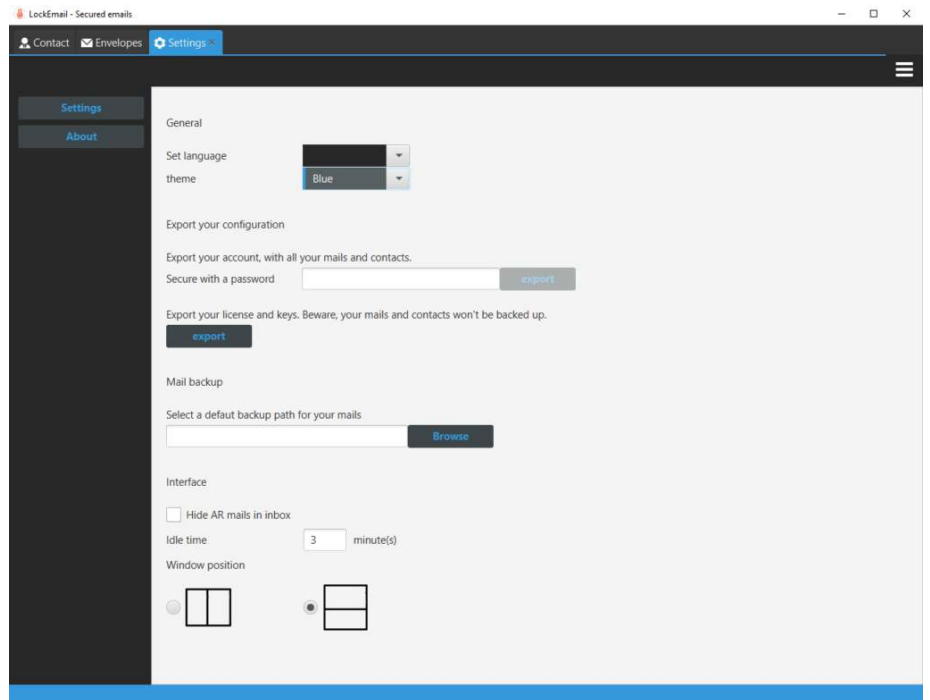
If your recipient does not have the function "**Secure Email**" or LockEmail.com software on his computer, he receives an invitation on his mailbox, he must perform his own account creation by following the information mentioned in the email. Once the software is installed and configured, the mail is now accessible from the Inbox for the recipient, and the Sent **Messages** for the sender. Your recipient is automatically added as a Contact. This installation allows him to read your Email Encrypted and to answer you via an **Encrypted Email**. To use the function, he will have to subscribe either to the mobile version via MDK Solutions, or to the fixed version via LockEmail.com.

Your usual box will receive a **confirmation of Sending**, a **confirmation of Receipt** as well as a **notification of Reading**.

## Settings\*\*

In Parameter, You can change the language, the theme color.

- You can export your account. (Ideal for a backup)
- Export your license and your keys.
- Select a default path for saving your emails.
- Select a default path for saving your emails.
- Change the position of the reading windows.



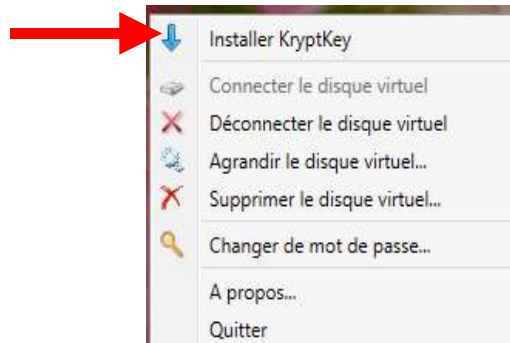
Your recipient receives an invitation on his mailbox, he must perform the creation of the account by following the information mentioned in the mail. Once the software is installed and configured, the mail is now accessible from the **Inbox** for the recipient, and the **Sent Messages** for the sender. Your recipient is automatically added as a **Contact**.

Your usual box will receive a **confirmation of sending**, a **confirmation of receipt** as well as a **notification of Reading**.

**\*\*** These features are only available on the **KryptKey Mail** version. To obtain them from your **KryptKey**, contact the service department via the contact page of the site <https://mdksolutions.com>.

## Installing the KryptKey app on your PC

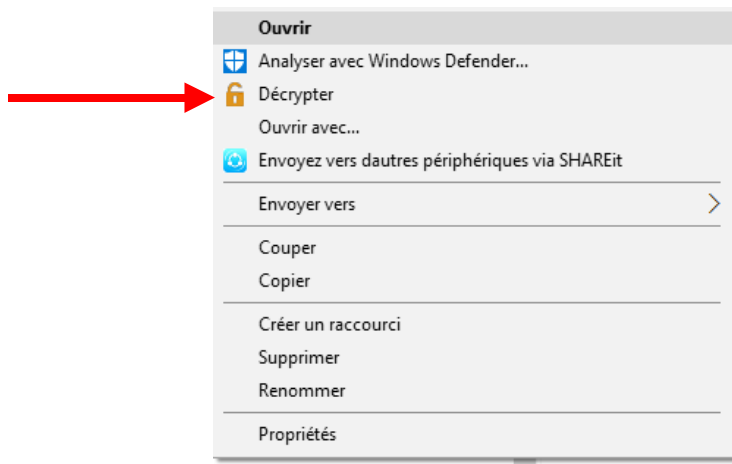
You can install the KryptKey app on your PC.



This optional solution brings you even more simplicity in file management

When the key is activated, a simple double-click on the encrypted file opens the document in its original format with the associated application (word, excel, ppt, pdf, ...).

A right-click on the file allows you to access the function Encrypt / Decrypt.



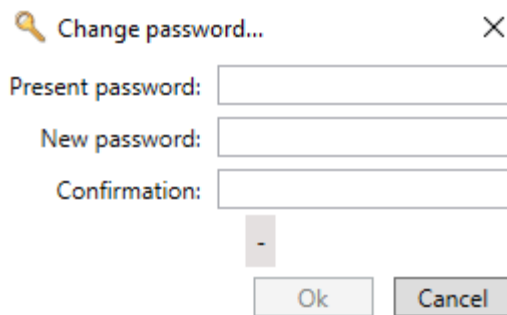
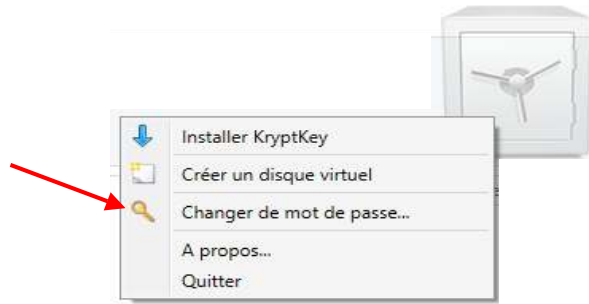
**When closing the application, the document is automatically saved encrypted.**

## Password management

### Password change

This operation requires an Internet connection. It does not affect the password of the **Secure Email function**.

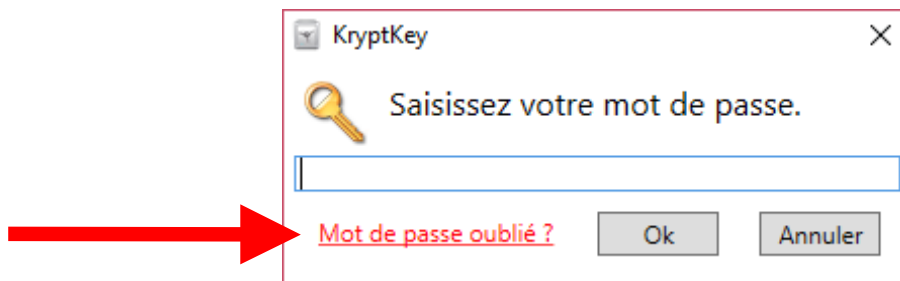
*An effective password is at least 8 characters long, contains lowercase, uppercase letters and at least one number and a special character for example!, :, @,%, \$*



Enter your current password.

Enter your new password and confirm it.

### Forgot your password





Launch the link contained in the email you received to the email address you provided when activating your **KryptKey**.



You will receive an email with a new password.

Restart MyDreamKey.exe by entering this password assigned.

Then change it.

## LOSS OF YOUR KRYPTKEY KEY

If you lost or had your **KryptKey** stolen, contact us at the following link

<http://www.mdk solutions.com/sav/>, or by sending an email to [contact@mdk solutions.com](mailto:contact@mdk solutions.com).

After making sure that you are the owner of the **KryptKey** (secret question / answer), we send you a new key that is identical to the one lost (clone with the same encryption key) against an amount of 30 € HT for the 16 GB model or 50 € HT for the 64 GB model.

This new **KryptKey** will allow you to access all of your encrypted files and your virtual disk (to the encrypted emails executing for the **KryptKey Mail** model)

We advise you to change the password of your new key.

## DEBRIDING YOUR KEY KRYPTKEY Essential KEY KRYPTKEY

**KryptKey Essential** can be 'unbridled' to get access to all the features of **KryptKey** (secure storage on all media, management of a Virtual Disk,, ...).

To do this, answer Ok in the previous window, then you access the website of **MDK Solutions** and the online purchase of **Kryptkey** from **KryptKey Essential**.



The screenshot shows a website banner with a blue header containing the text "CONFIDENTIAL FOLDERS TO SHARE ?" and "SHARING SOLUTIONS AND SECURE COLLABORATION". Below the banner is a product listing for "KRYPTKEY ESSENTIAL UPGRADE" priced at "24.90€ / 0.00392 B". A sub-price "So 20.75€ HT" is also shown. The listing includes a list of features: "Encryption/Decryption of files and folders" and "Creation of a secure virtual disk drive". A blue "ADD TO CART" button is visible at the bottom of the product listing. On the right side of the page, there is a vertical social media sharing bar with icons for Facebook, LinkedIn, Twitter, YouTube, and Google+.

*(\*) These features are only available on the **KryptKey** and **KryptKey Mail** versions. To access it from **KryptKey Essential**, simply purchase the update online from the **KryptKey Menu / About**.*

*(\*\*) This feature is only available on **KryptKey Mail***